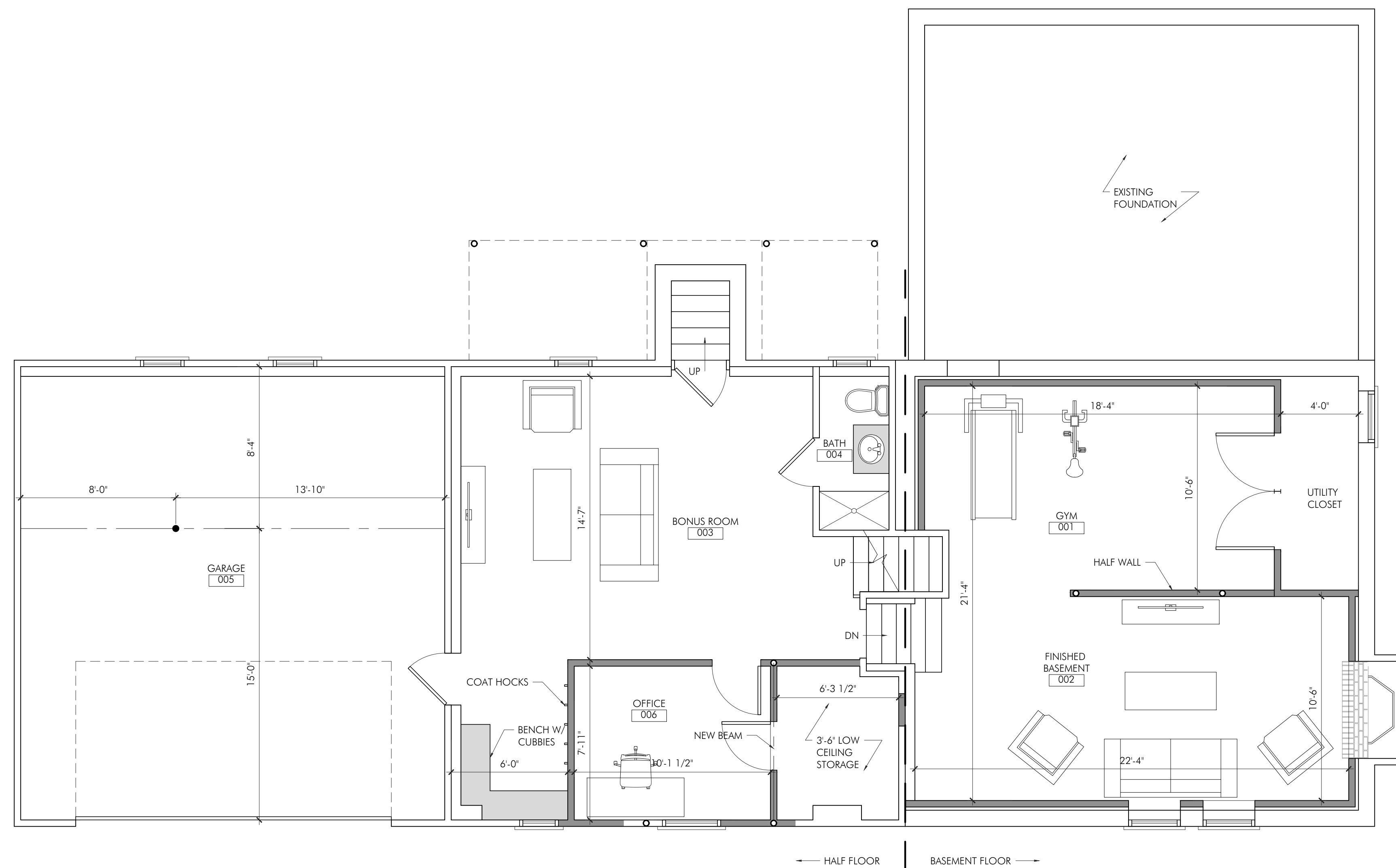


PROJECT:  
 RESIDENTIAL RENOVATION  
 PINNACLE PARK INVESTMENTS  
 216 OAK STREET  
 WESTWOOD, MA 02090

PROJECT NUMBER: 21271



FINISHED BASEMENT & GROUND FLOOR  
 SCALE: 1/4" = 1'-0"

STAMP:

ISSUE:	DATE:
PRELIMINARY	02.15.2022

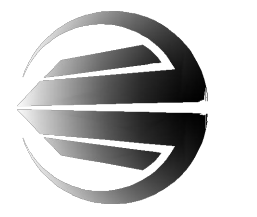
DRAWING SCALE: 1/4" = 1'-0"

DRAWN BY: HG CHECKED BY: DMC

DRAWING TITLE:  
 FLOOR PLANS OPTION A

DRAWING NUMBER:

A1.0



STAMP:

ISSUE:	DATE:
PRELIMINARY	02.15.2022

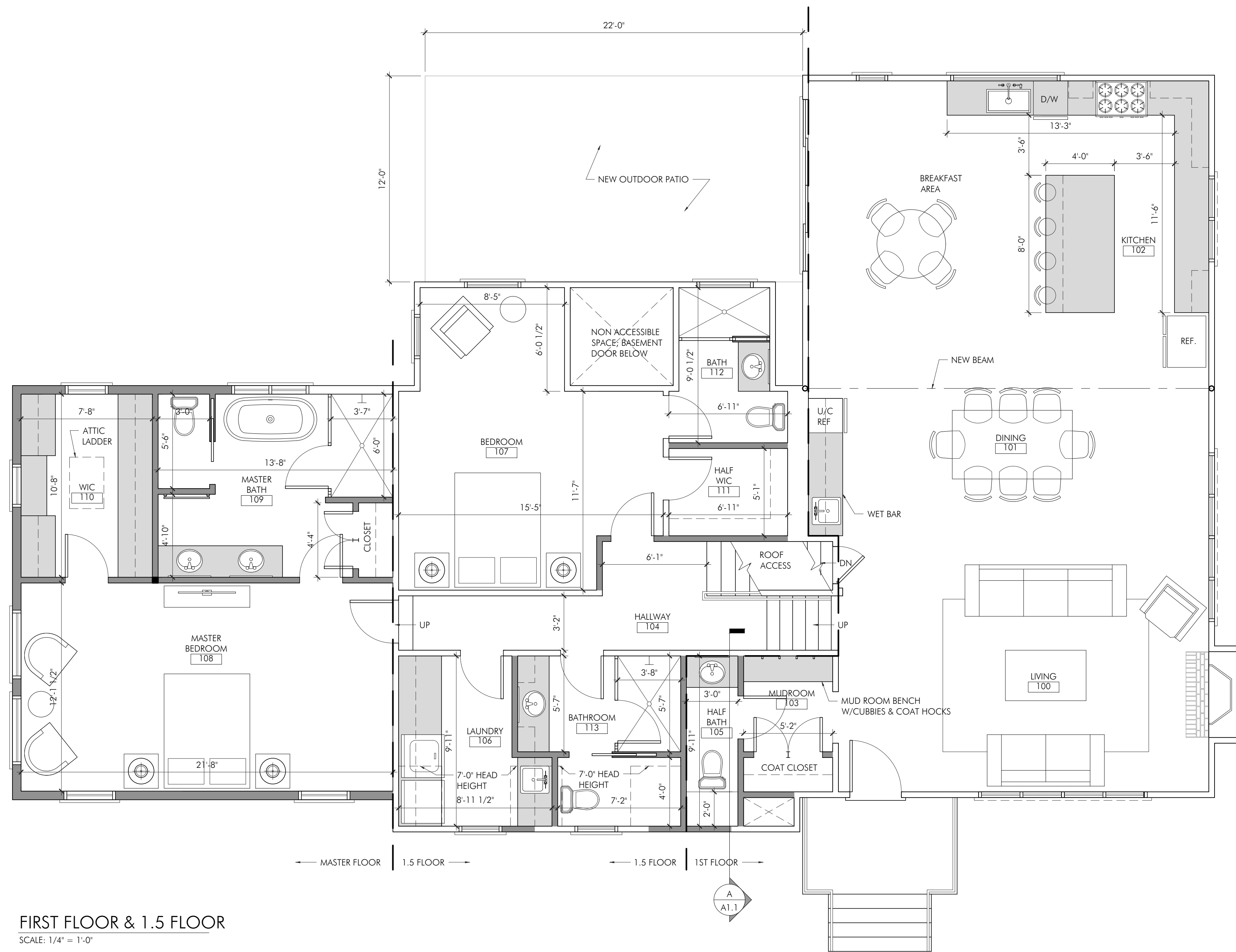
DRAWING SCALE: 1/4" = 1'-0"

DRAWN BY: HG CHECKED BY: DMC

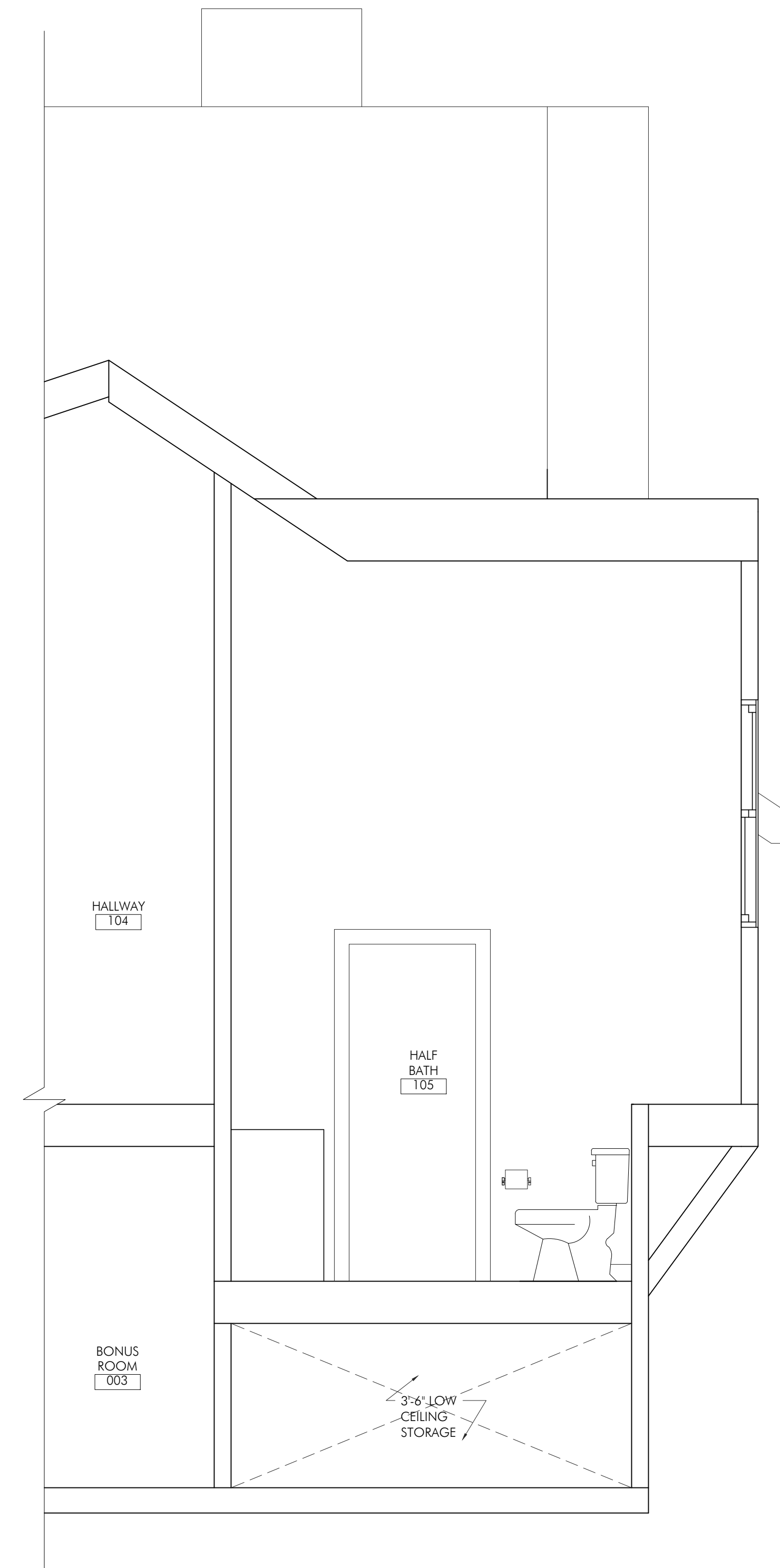
DRAWING TITLE:  
 FLOOR PLANS OPTION B

DRAWING NUMBER:

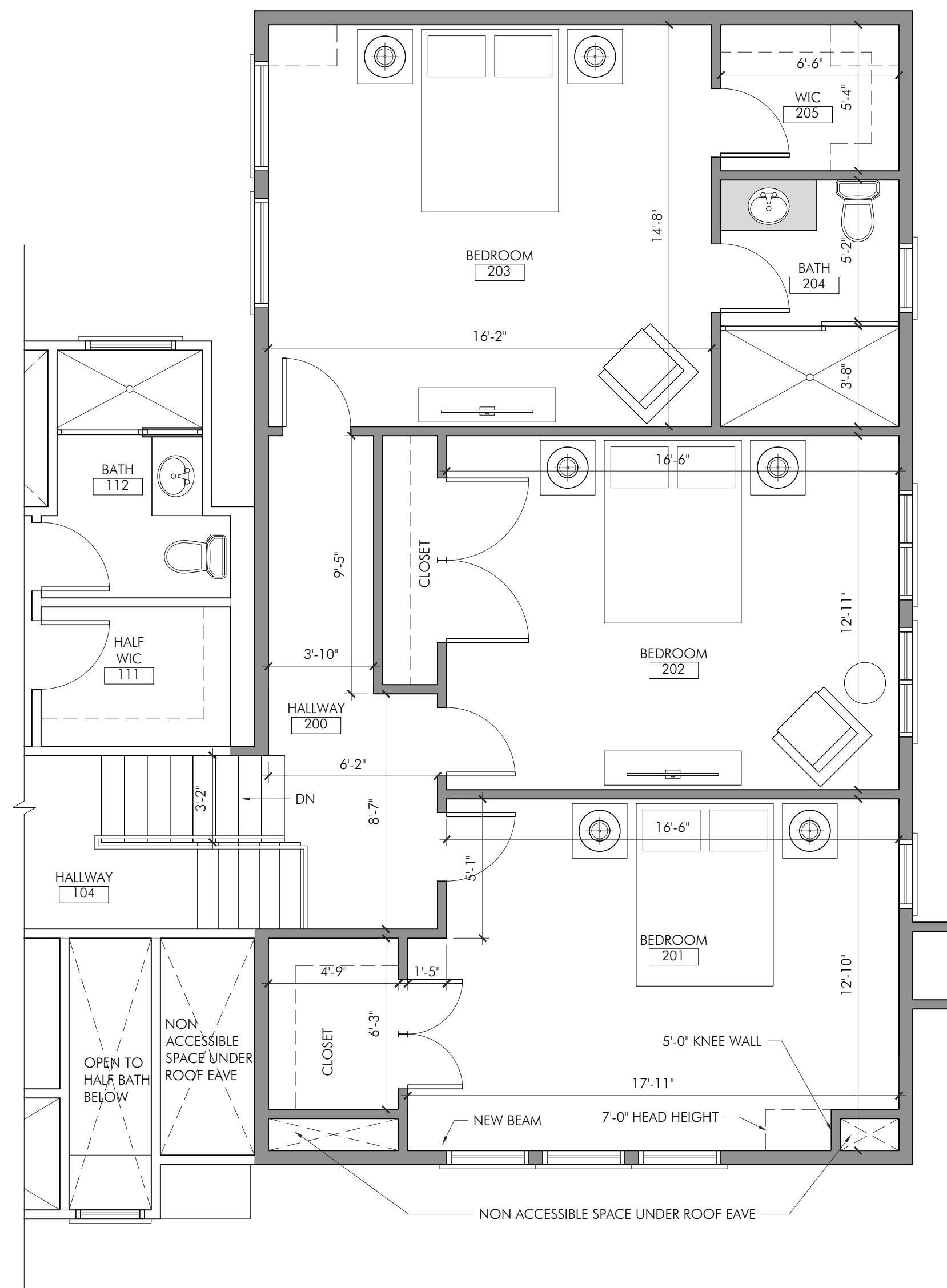
**A1.1**



FIRST FLOOR & 1.5 FLOOR  
 SCALE: 1/4" = 1'-0"



A A1.1 HALF BATH SECTION  
 SCALE: 1/2" = 1'-0"



**SECOND FLOOR**  
SCALE: 1/4" = 1'-0"

PROJECT:  
RESIDENTIAL RENOVATION  
PINNACLE PARK INVESTMENTS  
216 OAK STREET  
WESTWOOD, MA 02090

PROJECT NUMBER: 21271



132 CENTRAL STREET, SUITE 203, FOXBOROUGH, MA 02035  
P: 508-211-2122 F: 508-453-4466 WWW.DC-ARCHITECT.COM

STAMP:

ISSUE:	DATE:
PRELIMINARY	02.15.2022

DRAWING SCALE: 1/4" = 1'-0"

DRAWN BY: HG CHECKED BY: DMC

DRAWING TITLE:  
FLOOR PLANS OPTION B

DRAWING NUMBER:

**A1.1**